

# TECHNICAL and HOSPITALITY RIDER

Requirements to guarantee a professional show. If this is not possible: no problem (!), but please consult U2<sup>be</sup> *in advance* about this.

## STAGE / BACKSTAGE / DRESSING ROOM

STAGE:

- minimum size: width 8 meters - depth 5 meters - height 4 meters (at the back of the stage)
- 1 riser ... preferable : 3m x 2m height 30 - 40 cm (drums)
- Black backdrop over the full width of the stage
- FOH speakers are not to be placed on the stage

The stage must be free, clean and easily accessible on arrival of U2<sup>be</sup>.

If the concert is in open air, the stage should provide protection against all kinds of weather conditions (heavy winds, rain, cold, heat, ...) and should be completely covered (top, back, sides). Ditto for the FOH sound mixing position.

The **Backstage area** has a room (not accessible to the public and preferably lockable) where we can store our (flight)cases and other equipment.

## STAGEHANDS

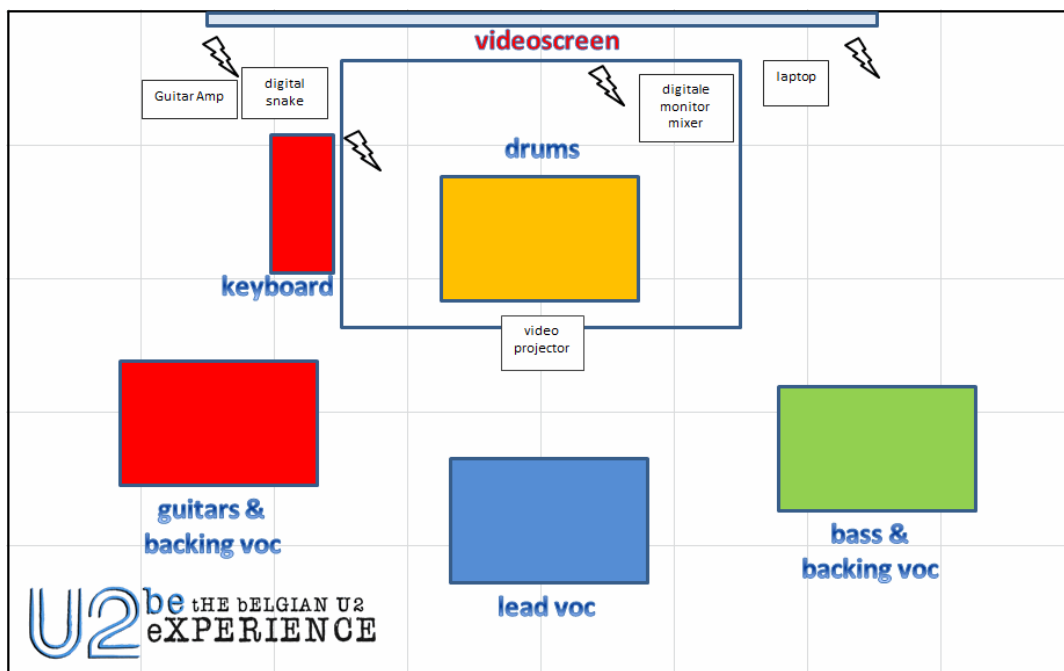
The organizer provides 2 stagehands to assist the band members (un)loading their gear before and immediately after the concert.

## POWER SUPPLY

Earthed power supply **near the stage**: at least 3 separate circuits of 230V/20A (1 for FOH speaker system, 1 for musical instruments and 1 for lighting on stage).

**At the FOH mixing position** 1 earthed circuit with plug box with at least 4 sockets. **On stage**: 4 earthed plug boxes for musical instruments (stageplan). All ⚡ power supplies are available on arrival.

All power supplies for lighting can not be on the same circuits as the sound system!!!



## SOUND

### U2<sup>be</sup> always brings :

- own FOH sound engineer (full access ... no limits !)
- own digital FOH mixing console (**Midas M32**)
- own digital monitoring console (**Behringer X32**)
- own in ear monitoring systems for all band members
- own cabling on stage
- own microphones and stands for vocals & drums

U2<sup>be</sup> uses 9 wireless devices (microphones, guitars and in ears) on stage. **To prevent malfunctions and interference, we expressly request that all wireless devices, which are not strictly necessary for the proper functioning of the sound system, are switched off completely during the U2<sup>be</sup> concert.**

**The FOH mixer of U2<sup>be</sup> always has to be connected directly to the sound system and not via a mixing table of the PA company. Exceptions to this are only possible in agreement with the U2<sup>be</sup> FOH technician.**

### Organizer provides:

- Powerful FOH speaker system and adapted to the concert location
- Double shielded CAT5 cable sufficiently long between the stage and the FOH mixing position for the connection between the 2 U2<sup>be</sup> digital mixing consoles
- Volume (dB) measuring equipment: ALWAYS set up at FOH position with measuring microphone at audience height!

## VIDEO PROJECTION

U2<sup>be</sup> always works with midi controlled video projection (image size 16:9).

All movies are sent to the projection medium by a laptop on stage (with Arkoas Grand VJ software) over a HDMI (or VGA) cable.

- **For big concert locations (stage > 45m<sup>2</sup>)** the organizer provides a projection screen (minimum 6m x 3,5m) with a powerful videoprojector/beamer (or LED-videowall minimum 4,5m x 2,5m) and sufficiently long HDMI (or VGA) cable to the center of the stages (see stageplan).
- **For smaller venues and under following circumstances** U2<sup>be</sup> has its own projection materials:
  - U2<sup>be</sup> is the only band at your event or at least 1 hour is provided between the different bands on the same stage.
  - It is an indoor performance in a room that can be completely obscured or the performance of U2<sup>be</sup> only starts after sunset.

Projection screen of 5 x 2,8 meter + short throw beamer 3400 ansi lumen. The beamer must be fixed in the roof of the stage at about 2,5m of the projection screen and preferably about 50cm higher than the top border of the screen. U2<sup>be</sup> brings a clamp for easy fixation of the beamer. **A sufficiently high ladder must be available on arrival of U2<sup>be</sup>.**

**If the U2<sup>be</sup> projection screen can't be attached to the backtruss, please provide a separate truss or pipe of at least 5,5 meters.** The placement is very simple: the white molton backdrop can be attached by way of large rubber bands with hooks on which easily go round a pipe. At the bottom of the backdrop we have a ballast tube to keep the backdrop nice and fixed.

**The organizer (or his supplier) provides a list of all to U2<sup>be</sup> available gear (sound, lighting, video) at least one week before the concert.**

### CONTACT

**Podium tech** : Geert Van Renterghem (+32 475 79 60 37) – [geert@U2be.eu](mailto:geert@U2be.eu)

**Video tech** : Franky Aneca (+32 476 86 07 73) – [franky@U2be.eu](mailto:franky@U2be.eu)

**FOH mixing** : Bruno van Reeth (+32 472 88 32 95) - [brunovnrth@gmail.com](mailto:brunovnrth@gmail.com)

**U2<sup>be</sup>** THE BELGIAN U2  
eXPERIENCE

## LIGHTING

*The sky is the limit* ... but we consider the things below to be minimum requirements to deliver a professional looking light show:

### 2 BACKTRUSSES

- 8 moving heads wash CMY (... or a mix with Moving head spots CMY)
- 11 x LED par 64 (or similar multicolor devices)
- 2 blinders

### FLOOR

2 sets x 4 par 64 (white) ... at the back of the stage

### FRONT (on windups or front truss)

8 x par 64 (white) ... crossbed over the stage for the best possible result of the video projection at the back of the stage.

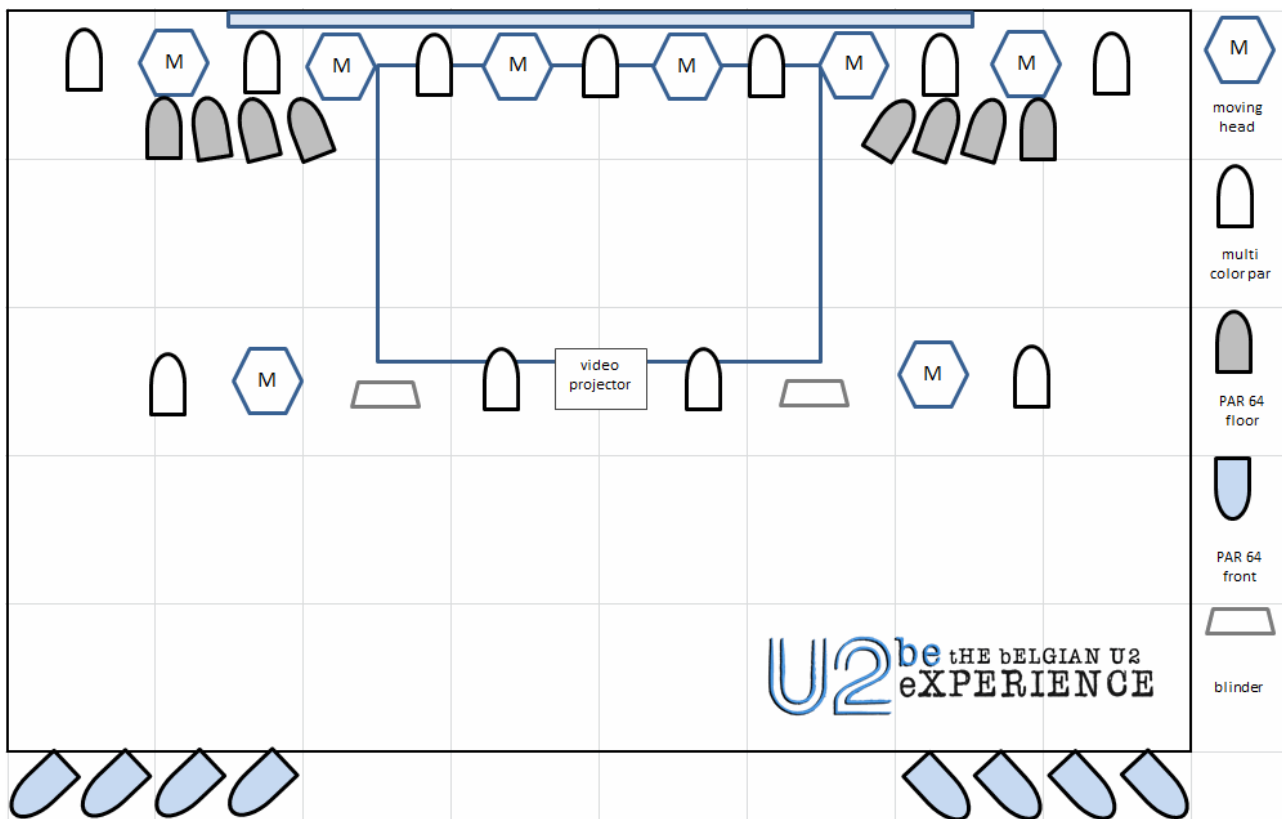
### FOGGER

... essential for a beautiful lightshow, but spread equally and moderately to guarantee the visibility of the video projection at the back of the stage.

**The videoprojection is our most important “stage decoration” element. Please keep this in mind when setting up and operating the lighting devices!!!**

**LIGHT ENGINEER:** competent, motivated ... and **to be provided by the organizer/supplier!**

Advice/question: please stick to the basic colors used in the projected video images to get cohesion between lights and images (ex : Where the streets have no name – RED & WHITE / MLK – no lights !, ...). U2<sup>be</sup> will provide the light engineer with the necessary information combined with our playlist on arrival.



## CATERING

The catering (drinks & meals) for the group members and technician (s) are at the expense of the organizer, and this for the entire stay of U2be at the location of the performance (preparation of material, sound check, performance, stay after performance). The organizer provides chilled soft drinks in the dressing room and on the stage.

## ACCOMMODATION

The client provides a hotel with breakfast and other catering for 6 people (3 x double room). This condition must only be met after consultation with the band.